

**Memorandum**

To: City Council

From: Councilor Baker

Subject: Resolution regarding public masking to go with funds for Covid-19 response #239-20

Date: April 30, 2020

Cc: Mayor Fuller, Commissioner Youngblood, COO Yeo, City Solicitor Giuliani

I will have more information on Monday, but I want provide background to help prepare for offering a Council Resolution on Monday, May 3, to accompany the vote on the funding for the City's response to COVID-19 under docket #239-20. The text of the proposed Resolution follows the background information.

**1. Background.**

Mayor Ruthanne Fuller's April 29, 2020 Update about COVID-19 in Newton said in part as follows:

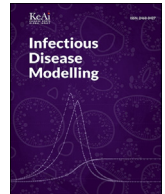
"The Centers for Disease Control and Prevention (CDC) and the Massachusetts Department of Public Health advise people to wear cloth face coverings in public settings, especially where physical distancing measures are difficult to maintain (e.g., grocery stores and pharmacies). Notably, the CDC reports that people who show no symptoms of illness may still be able to spread COVID-19 and advises that a face covering may help prevent the spread. At this time, I, with the input of our Commissioner of Health and Human Services, Deborah Youngblood, will continue to strongly encourage people to wear face coverings, especially where physical distancing measures are difficult to maintain. Some residents have asked about whether face coverings are needed when outside, such as while going for a walk or a run. If you are indoors or outdoors and cannot maintain distance from others, wear a face covering. [*Photo of the Mayor in a mask*] Some municipalities in the Commonwealth are requiring people to wear face coverings and are implementing fines for those who do not. An order or fine requiring face coverings will not be implemented in the City of Newton at this time. We will continue to monitor the medical advice from the CDC and MDPH and conditions here in Newton and will revisit this decision as things evolve with all aspects of public health continuing to be our focus. It's our responsibility: wear a face covering."

The question is how will we collectively fulfill that responsibility? Neighboring Brookline, Needham, Waltham, Watertown, and perhaps Wellesley, which is deciding today, have decided to require face coverings in public circumstances, and not just advise them to be used. So also have Belmont, Cambridge, Framingham, and Somerville, among others. In her 04/29 Update Mayor Fuller indicated a willingness to revisit this decision. So as to provide possibly relevant information, I have asked Mr. Olson, as Clerk of the Council, to post along with this memorandum a paper available first online on 04-21-20, S. E. Eikenberry, et al, of Arizona State University, *To mask or not to mask: Modeling the potential for face mask use by the general public to curtail the COVID-19 pandemic*, 5 INFECTIOUS DISEASE MODELLING 293-308 (2020), which discusses the value of the broad adoption of masks, both for wearers as well as others, together with social distancing and good hygiene.

**2. Proposed Resolution.**

I will propose the following Resolution on Monday to accompany the vote on #239-20:

*Resolved: That the City Council, to protect public health and improve public confidence in the use of stores and other public spaces, urges Mayor Fuller and Health and Human Services Commissioner Youngblood to require the wearing of face coverings in circumstances appropriate for Newton, such as in stores or where social distancing is not possible outside, or otherwise more broadly as may help avoid or limit infection.*



# To mask or not to mask: Modeling the potential for face mask use by the general public to curtail the COVID-19 pandemic



Steffen E. Eikenberry, Marina Mancuso, Enahoro Iboi, Tin Phan, Keenan Eikenberry, Yang Kuang, Eric Kostelich, Abba B. Gumel\*

School of Mathematical and Statistical Sciences, Arizona State University, Tempe, AZ, 85287, USA

## ARTICLE INFO

### Article history:

Received 6 April 2020

Accepted 16 April 2020

Available online 21 April 2020

### Keywords:

Face mask

Non-pharmaceutical intervention

Cloth mask

N95 respirator

Surgical mask

SARS-CoV-2

COVID-19

## ABSTRACT

Face mask use by the general public for limiting the spread of the COVID-19 pandemic is controversial, though increasingly recommended, and the potential of this intervention is not well understood. We develop a compartmental model for assessing the community-wide impact of mask use by the general, asymptomatic public, a portion of which may be asymptotically infectious. Model simulations, using data relevant to COVID-19 dynamics in the US states of New York and Washington, suggest that broad adoption of even relatively ineffective face masks may meaningfully reduce community transmission of COVID-19 and decrease peak hospitalizations and deaths. Moreover, mask use decreases the effective transmission rate in nearly linear proportion to the product of mask effectiveness (as a fraction of potentially infectious contacts blocked) and coverage rate (as a fraction of the general population), while the impact on epidemiologic outcomes (death, hospitalizations) is highly nonlinear, indicating masks could synergize with other non-pharmaceutical measures. Notably, masks are found to be useful with respect to both preventing illness in healthy persons *and* preventing asymptomatic transmission. Hypothetical mask adoption scenarios, for Washington and New York state, suggest that immediate near universal (80%) adoption of moderately (50%) effective masks could prevent on the order of 17–45% of projected deaths over two months in New York, while decreasing the peak daily death rate by 34–58%, absent other changes in epidemic dynamics. Even very weak masks (20% effective) can still be useful if the underlying transmission rate is relatively low or decreasing: In Washington, where baseline transmission is much less intense, 80% adoption of such masks could reduce mortality by 24–65% (and peak deaths 15–69%), compared to 2–9% mortality reduction in New York (peak death reduction 9–18%). Our results suggest use of face masks by the general public is potentially of high value in curtailing community transmission and the burden of the pandemic. The community-wide benefits are likely to be greatest when face masks are used in conjunction with other non-pharmaceutical practices (such as social-distancing), and when adoption is nearly universal (nation-wide) and compliance is high.

© 2020 The Authors. Production and hosting by Elsevier B.V. on behalf of KeAi Communications Co., Ltd. This is an open access article under the CC BY license (<http://creativecommons.org/licenses/by/4.0/>).

\* Corresponding author.

E-mail address: [agumel@asu.edu](mailto:agumel@asu.edu) (A.B. Gumel).

Peer review under responsibility of KeAi Communications Co., Ltd.

## 1. Introduction

Under the ongoing COVID-19 pandemic (caused by the SARS-CoV-2 coronavirus), recommendations and common practices regarding face mask use by the general public have varied greatly and are in rapid flux: Mask use by the public in public spaces has been controversial in the US, although as of April 3, 2020, the US Centers for Disease Control and Prevention (CDC) is recommending the public wear cloth masks. Public mask use is far more prevalent in many Asian countries, which have longer experience with novel coronavirus epidemics; public mask use may have been effective at limiting community spread during the 2003 SARS epidemic (Lau, Tsui, Lau, & Yang, 2004; Wu et al., 2004), and widespread mask use is a prominent feature of the relatively successful COVID-19 response in Taiwan (Wang, Ng, & Brook, 2020), for example. Masks have also been suggested as a method for limiting community transmission by asymptomatic or at least clinically undetected carriers (Chan & Yuen, 2020), who may be a major driver of transmission of COVID-19 (Li et al., 2020). Various experimental studies suggest that masks may both protect the wearer from acquiring various infections (Davies et al., 2013; Lai, Poon, & Cheung, 2012) or transmitting infection (Dharmadikari et al., 2012). Medical masks (i.e., surgical masks and N95 respirators) in healthcare workers appear to consistently protect against respiratory infection under metanalysis (MacIntyre et al., 2017; Offeddu, Yung, Low, & Tam, 2017), although clinical trials in the community have yielded more mixed results (Canini et al., 2010; Cowling et al., 2009; MacIntyre et al., 2009). While medical-grade masks should be prioritized for healthcare providers, homemade cloth masks may still afford significant, although variable and generally lesser, protection (Davies et al., 2013; van der Sande, Teunis, & Sabel, 2008), but clinical trials in the community remain lacking.

Given the flux in recommendations, and uncertainty surrounding the possible community-wide impact of mass face masks (especially homemade cloth masks) on COVID-19 transmission, we have developed a multi-group Kermack-McKendrick-type compartmental mathematical model, extending prior work geared towards modeling the COVID-19 pandemic (e.g. Ferguson et al., 2020; Li et al., 2020; Tracht, Del Valle, & Hyman, 2010), as well as models previously used to examine masks in a potential influenza pandemic (Brienen, Timen, Wallinga, Van Steenbergen, & Teunis, 2010; Tracht et al., 2010). This initial framework suggests that masks could be effective even if implemented as a singular intervention/mitigation strategy, but especially in combination with other non-pharmaceutical interventions that decrease community transmission rates.

Whether masks can be useful, even in principle, depends on the mechanisms for transmission for SARS-CoV-2, which are likely a combination of droplet, contact, and possible airborne (aerosol) modes. The traditional model for respiratory disease transmission posits infection via infectious droplets (generally 5–10  $\mu\text{m}$ ) that have a short lifetime in the air and infect the upper respiratory tract, or finer aerosols, which may remain in the air for many hours (Leung et al., 2020), with ongoing uncertainties in the relative importance of these modes (and in the conceptual model itself Bourouiba, 2020) for SARS-CoV-2 transmission (Bourouiba, 2020; Han, Lin, Ni, & You, 2020). The WHO (World Health Organization, 2020, p. 27) has stated that SARS-CoV-2 transmission is primarily via coarse respiratory droplets and contact routes. An experimental study (van Doremalen et al., 2020) using a nebulizer found SARS-CoV-2 to remain viable in aerosols (< 5  $\mu\text{m}$ ) for 3 h (the study duration), but the clinical relevance of this setup is debatable (World Health Organization, 2020, p. 27). One out of three symptomatic COVID-19 patients caused extensive environmental contamination in (Ong et al., 2020), including of air exhaust outlets, though the air itself tested negative.

Face masks can protect against both coarser droplet and finer aerosol transmission, though N95 respirators are more effective against finer aerosols, and may be superior in preventing droplet transmission as well (MacIntyre et al., 2017). Metanalysis of studies in healthy healthcare providers (in whom most studies have been performed) indicated a strong protective value against clinical and respiratory virus infection for both surgical masks and N95 respirators (Offeddu et al., 2017). Case control data from the 2003 SARS epidemic suggests a strong protective value to mask use by community members in public spaces, on the order of 70% (Lau et al., 2004; Wu et al., 2004).

Experimental studies in both humans and manikins indicate that a range of masks provide at least some protective value against various infectious agents (Davies et al., 2013; Driessche et al., 2015; Stockwell et al., 2018; van der Sande et al., 2008; Leung et al., 2020). Medical masks were potentially highly effective as both source control and primary prevention under tidally breathing and coughing conditions in manikin studies (Lai et al., 2012; Patel, Skaria, Mansour, & Smaldone, 2016), with higher quality masks (e.g. N95 respirator vs. surgical mask) offering greater protection (Patel et al., 2016). It is largely unknown to what degree homemade masks (typically made from cotton, tea cloth, or other polyester fibers) may protect against droplets/aerosols and viral transmission, but experimental results by Davies et al. 7 suggest that while the homemade masks were less effective than surgical masks, they were still markedly superior to no mask. A clinical trial in healthcare workers (MacIntyre et al., 2015) showed relatively poor performance for cloth masks relative to medical masks.

Mathematical modeling has been influential in providing deeper understanding on the transmission mechanisms and burden of the ongoing COVID-19 pandemic, contributing to the development of public health policy and understanding. Most mathematical models of the COVID-19 pandemic can broadly be divided into either population-based, SIR (Kermack-McKendrick)-type models, driven by (potentially stochastic) differential equations (Li et al., 2020; Tang et al., 2020; Wu, Leung, & Leung, 2020; Kucharski et al., 2020; Calafiore, Novara, & Possieri, 2020; Simha, Prasad, & Narayana, 2020; Dehning et al., 2020; Nesteruk, 2020; Zhang et al., 2020; Anastassopoulou, Russo, Tsakris, & Siettos, 2020; Moore & Okyere, 2004), or agent-based models (Biswas, Khaleque, & Sen, 2020; Chang, Harding, Zachreson, Cliff, & Prokopenko, 2020; Ferguson et al., 2020; Ruiz Estrada & Koutroufas, 2020; Wilder et al., 2020), in which individuals typically interact on a network structure and exchange infection stochastically. One difficulty of the latter approach is that the network structure is time-varying and can be difficult, if not impossible, to construct with accuracy. Population-based models, alternatively, may

risk being too coarse to capture certain real-world complexities. Many of these models, of course, incorporate features from both paradigms, and the right combination of dynamical, stochastic, data-driven, and network-based methods will always depend on the question of interest.

In Li et al. (2020) imposed a metapopulation structure onto an SEIR-model to account for travel between major cities in China. Notably, they include compartments for both documented and undocumented infections. Their model suggests that as many as 86% of all cases went undetected in Wuhan before travel restrictions took effect on January 23, 2020. They additionally estimated that, on a per person basis, asymptomatic individuals were only 55% as contagious, yet were responsible for 79% of new infections, given their increased prevalence. The importance of accounting for asymptomatic individuals has been confirmed by other studies (Calafiore et al., 2020; Ferguson et al., 2020; Moriarty, 2020; Verity et al., 2020). In their model-based assessment of case-fatality ratios, Verity et al. (2020) estimated that 40–50% of cases went unidentified in China, as of February 8, 2020, while in the case of the Princess Diamond cruise ship, 46.5% of individuals who tested positive for COVID-19 were asymptomatic (Moriarty, 2020). Further, Calafiore et al. (2020), using a modified SIR-model, estimated that, on average, cases in Italy went underreported by a factor of 63, as of March 30, 2020.

Several prior mathematical models, motivated by the potential for pandemic influenza, have examined the utility of mask wearing by the general public. These include a relatively simple modification of an SIR-type model by Brien et al. (2010), while Tracht et al. (2010) considered a more complex SEIR model that explicitly disaggregated those that do and do not use masks. The latter concluded that, for pandemic H1N1 influenza, modestly effective masks (20%) could halve total infections, while if masks were just 50% effective as source control, the epidemic could be essentially eliminated if just 25% of the population wore masks.

We adapt these previously developed SEIR model frameworks for transmission dynamics to explore the potential community-wide impact of public use of face masks, of varying efficacy and compliance, on the transmission dynamics and control of the COVID-19 pandemic. In particular, we develop a two-group model, which stratifies the total population into those who habitually do and do not wear face masks in public or other settings where transmission may occur. This model takes the form of a deterministic system of nonlinear differential equations, and explicitly includes asymptotically-infectious humans. We examine mask effectiveness and coverage (i.e., the fraction of the population that habitually wears masks) as our two primary parameters of interest.

We explore possible nonlinearities in mask coverage and effectiveness and the interaction of these two parameters; we find that the product of mask effectiveness and coverage level strongly predicts the effect of mask use on epidemiologic outcomes. Thus, homemade cloth masks are best deployed *en masse* to benefit the population at large. There is also a potentially strong nonlinear effect of mask use on the epidemiologic outcomes of cumulative death and peak hospitalizations. We note a possible temporal effect: Delaying mass mask adoption too long may undermine its efficacy. Moreover, we perform simulated case studies using mortality data for New York and Washington state. These case studies likewise suggest a beneficial role to mass adoption of even poorly effective masks, with the relative benefit likely greater in Washington state, where baseline transmission is less intense. The absolute potential for saving lives is still, however, greater under the more intense transmission dynamics in New York state. Thus, early adoption of masks is useful regardless of transmission intensities, and should not be delayed even if the case load/mortality seems relatively low.

In summary, the benefit to routine face mask use by the general public during the COVID-19 pandemic remains uncertain, but our initial mathematical modeling work suggests a possible strong potential benefit to near universal adoption of even weakly effective homemade masks that may *synergize with*, not replace, other control and mitigation measures.

## 2. Methods

### 2.1. Baseline mathematical models

#### 2.1.1. Model with no mask use

We consider a baseline model without any mask use to form the foundation for parameter estimation and to estimate transmission rates in New York and Washington state; we also use this model to determine the equivalent transmission rate reductions resulting from public mask use in the full model.

We use a deterministic susceptible, exposed, symptomatic infectious, hospitalized, asymptomatic infectious, and recovered modeling framework, with these classes respectively denoted  $S(t)$ ,  $E(t)$ ,  $I(t)$ ,  $H(t)$ ,  $A(t)$ , and  $R(t)$ ; we also include  $D(t)$  to track cumulative deaths. We assume that some fraction of symptomatic infectious individuals progress to the hospitalized class,  $H(t)$ , where they are unable to pass the disease to the general public; we suppose that some fraction of hospitalized patients ultimately require critical care (and may die) (Zhou et al., 2020), but do not explicitly disaggregate, for example, ICU and non-ICU patients. Based on these assumptions and simplifications, the basic model for the transmission dynamics of COVID-19 is given by the following deterministic system of nonlinear differential equations:

$$\frac{dS}{dt} = -\beta(t)(I + \eta A) \frac{S}{N}, \quad (1)$$

$$\frac{dE}{dt} = \beta(t)(I + \eta A) \frac{S}{N} - \sigma E, \quad (2)$$

$$\frac{dI}{dt} = \alpha \sigma E - \phi I - \gamma_I I, \quad (3)$$

$$\frac{dA}{dt} = (1 - \alpha) \sigma E - \gamma_A A, \quad (4)$$

$$\frac{dH}{dt} = \phi I - \delta H - \gamma_H H, \quad (5)$$

$$\frac{dR}{dt} = \gamma_I I + \gamma_A A + \gamma_H H, \quad (6)$$

$$\frac{dD}{dt} = \delta H, \quad (7)$$

where

$$N = S + E + I + A + R, \quad (8)$$

is the total population in the community, and  $\beta(t)$  is the baseline infectious contact rate, which is assumed to vary with time in general, but typically taken fixed. Additionally,  $\eta$  accounts for the relative infectiousness of asymptomatic carriers (in comparison to symptomatic carriers),  $\sigma$  is the transition rate from the exposed to infectious class (so  $1/\sigma$  is the disease incubation period),  $\alpha$  is the fraction of cases that are symptomatic,  $\phi$  is the rate at which symptomatic individuals are hospitalized,  $\delta$  is the disease-induced death rate, and  $\gamma_A$ ,  $\gamma_I$  and  $\gamma_H$  are recovery rates for the subscripted population.

We suppose hospitalized persons are not exposed to the general population. Thus, they are excluded from the tabulation of  $N$ , and do not contribute to infection rates in the general community. This general modeling framework is similar to a variety of SEIR-style models recently employed in (Ferguson et al., 2020; Li et al., 2020), for example.

For most results in this paper, we set  $\beta(t) \equiv \beta_0$ . However, given ongoing responses to the COVID-19 pandemic in terms of voluntary and mandated social distancing, etc., we also consider the possibility that  $\beta$  varies with time and adopt the following functional form from Tang et al. (Tang et al., 2020), with the modification that contact rates do not begin declining from the initial contact rate,  $\beta_0$ , until time  $t_0$ :

$$\beta(t) = \begin{cases} \beta_0, & t < t_0 \\ \beta_{\min} + (\beta_0 - \beta_{\min}) \exp(-r(t - t_0)), & t \geq t_0 \end{cases} \quad (9)$$

where  $\beta_{\min}$  is the minimum contact rate and  $r$  is the rate at which contact decreases.

## 2.2. Baseline epidemiological parameters

The incubation period for COVID-19 is estimated to average 5.1 days (Lauer et al., 2020), similar to other model-based estimates (Li et al., 2020), giving  $\sigma = 1/5.1 \text{ day}^{-1}$ . Some previous model-based estimates of infectious duration are on the order of several days (Ferguson et al., 2020; Li et al., 2020; Tang et al., 2020), with (Tang et al., 2020) giving about 7 days for asymptomatic individuals to recover. However, the clinical course of the disease is typically much longer: In a study of hospitalized patients (Zhou et al., 2020), average total duration of illness until hospital discharge or death was 21 days, and moreover, the median duration of viral shedding was 20 days in survivors.

The effective transmission rate,  $\beta_0$  (as a constant), ranges from around 0.5 to 1.5  $\text{day}^{-1}$  in prior modeling studies (Li et al., 2020; Read, Bridgen, Cummings, Ho, & Jewell, 2020; Shen, Peng, Xiao, & Zhang, 2020), and typically trends down with time (Li et al., 2020; Tang et al., 2020). We have left this as a free parameter in our fits to Washington and New York state mortality data, and find  $\beta_0 \approx 0.5$  and  $\beta_0 \approx 1.4 \text{ day}^{-1}$  for these states, respectively, which is consistent with the cited range.

The relative infectiousness of asymptomatic carriers,  $\eta$ , is not known, although Ferguson et al. (Ferguson et al., 2020) estimated this parameter at about 0.5, and Li et al. (Li et al., 2020) gave values of 0.42–0.55. The fraction of cases that are symptomatic,  $\alpha$ , is also uncertain, with Li et al. 5 suggesting an overall case reporting rate of just 14% early in the outbreak in China, but increasing to 65–69% later; further,  $\alpha = 2/3$  was used in (Ferguson et al., 2020). In the case of the Diamond Princess Cruise ship 43, 712 (19.2%) passengers and crews tested positive for SARS-CoV-2, with 331 (46.5%) asymptomatic at the time of testing. Therefore, we choose  $\alpha = 0.5$  as our default.

Given an average time from symptom onset to dyspnea of 7 days in 44, 9 days to sepsis, and a range of 1–10 days to hospitalization, a midpoint of 5 days seems reasonable (see also 15);  $\phi \approx 0.025 \text{ day}^{-1}$  is consistent with on the order of 5–15%



of symptomatic patients being hospitalized. If about 15% of hospitalized patients die (Ferguson et al., 2020), then  $\delta \approx 0.015 \text{ day}^{-1}$  (based on  $\gamma_H = 1/14 \text{ day}^{-1}$ ).

### 2.2.1. Model with general population mask use

We assume that some fraction of the general population wears masks with uniform inward efficiency (i.e., primary protection against catching disease) of  $\varepsilon_i$ , and outward efficiency (i.e., source control/protection against transmitting disease) of  $\varepsilon_o$ . We disaggregate all population variables into those that typically do and do not wear masks, respectively subscripted with  $U$  and  $M$ . Based on the above assumptions and simplifications, the extended multi-group model for COVID-19 (where members of the general public wear masks in public) is given by:

$$\frac{dS_U}{dt} = -\beta(I_U + \eta A_U) \frac{S_U}{N} - \beta((1 - \varepsilon_o)I_M + (1 - \varepsilon_o)\eta A_M) \frac{S_U}{N}, \quad (10)$$

$$\frac{dE_U}{dt} = \beta(I_U + \eta A_U) \frac{S_U}{N} + \beta((1 - \varepsilon_o)I_M + (1 - \varepsilon_o)\eta A_M) \frac{S_U}{N} - \sigma E_U, \quad (11)$$

$$\frac{dI_U}{dt} = \alpha \sigma E_U - \phi I_U - \gamma_I I_U, \quad (12)$$

$$\frac{dA_U}{dt} = (1 - \alpha) \sigma E_U - \gamma_A A_U, \quad (13)$$

$$\frac{dH_U}{dt} = \phi I_U - \delta H_U - \gamma_H H_U, \quad (14)$$

$$\frac{dR_U}{dt} = \gamma_I I_U + \gamma_A A_U + \gamma_H H_U, \quad (15)$$

$$\frac{dD_U}{dt} = \delta H_U, \quad (16)$$

$$\frac{dS_M}{dt} = -\beta(1 - \varepsilon_i)(I_U + \eta A_U) \frac{S_M}{N} - \beta(1 - \varepsilon_i)((1 - \varepsilon_o)I_M + (1 - \varepsilon_o)\eta A_M) \frac{S_M}{N}, \quad (17)$$

$$\frac{dE_M}{dt} = \beta(1 - \varepsilon_i)(I_U + \eta A_U) \frac{S_M}{N} + \beta(1 - \varepsilon_i)((1 - \varepsilon_o)I_M + (1 - \varepsilon_o)\eta A_M) \frac{S_M}{N} - \sigma E_M, \quad (18)$$

$$\frac{dI_M}{dt} = \alpha \sigma E_M - \phi I_M - \gamma_I I_M, \quad (19)$$

$$\frac{dA_M}{dt} = (1 - \alpha) \sigma E_M - \gamma_A A_M, \quad (20)$$

$$\frac{dH_M}{dt} = \phi I_M - \delta H_M - \gamma_H H_M, \quad (21)$$

$$\frac{dR_M}{dt} = \gamma_I I_M + \gamma_A A_M + \gamma_H H_M, \quad (22)$$

$$\frac{dD_M}{dt} = \delta H_M, \quad (23)$$

where

$$N = S_U + E_U + I_U + A_U + R_U + S_M + E_M + I_M + A_M + R_M. \quad (25)$$

While much more complex than the baseline model, most of the complexity lies in what are essentially bookkeeping terms. We also consider a reduced version of the above model (equations not shown), such that only symptomatically infected persons wear a mask, to compare the consequences of the common recommendation that only those experiencing symptoms (and their immediate caretakers) wear masks with more general population coverage.

### 2.3. Mask efficiency parameters

We assume a roughly linear relationship between the overall filtering efficiency of a mask and clinical efficiency in terms of either inward efficiency (i.e., effect on  $\varepsilon_i$ ) or outward efficiency ( $\varepsilon_o$ ), based on Brien et al. (2010). The fit factor for homemade masks averaged 2 in Davies et al. (2013), while the fit factor averaged 5 for surgical masks. When volunteers coughed into a

mask, depending upon sampling method, the number of colony-forming units resulting varied from 17% to 50% for home-made masks and 0–30% for surgical masks, relative to no mask (Davies et al., 2013).

Surgical masks reduced *P. aeruginosa* infected aerosols produced by coughing by over 80% in cystic fibrosis patients in Driessche et al. (2015), while surgical masks reduced CFU count by > 90% in a similar study (Stockwell et al., 2018). N95 masks were more effective in both studies. Homemade teal cloth masks had an inward efficiency between (58) and 77% over 3 h of wear in van der Sande et al. (2008), while inward efficiency ranged 72–85% and 98–99% for surgical and N95-equivalent masks. Outward efficiency was marginal for teal cloth masks, and about 50–70% for medical masks. Surgical masks worn by tuberculosis patients also reduced the infectiousness of hospital ward air in Dharmadhikari et al. (2012), and Leung et al. (2020) very recently observed surgical masks to decrease infectious aerosol produced by individuals with seasonal coronaviruses. Manikin studies seem to recommend masks as especially valuable under coughing conditions for both source control (Patel et al., 2016) and prevention (Lai et al., 2012).

We therefore estimate that inward mask efficiency could range widely, anywhere from 20 to 80% for cloth masks, with  $\geq 50\%$  possibly more typical (and higher values are possible for well-made, tightly fitting masks made of optimal materials), 70–90% typical for surgical masks, and > 95% typical for properly worn N95 masks. Outward mask efficiency could range from practically zero to over 80% for homemade masks, with 50% perhaps typical, while surgical masks and N95 masks are likely 50–90% and 70–100% outwardly protective, respectively.

## 2.4. Data and model fitting

We use state-level time series for cumulative mortality data compiled by the Center for Systems Science and Engineering at Johns Hopkins University (2020), from January 22, 2020, through April 2, 2020, to calibrate the model initial conditions and infective contact rate,  $\beta_0$ , as well as  $\beta_{min}$  when  $\beta(t)$  is taken as an explicit function of time. Other parameters are fixed at default values in Table 1. Parameter fitting was performed using a nonlinear least squares algorithm implemented using the lsqnonlin function in MATLAB. We consider two US states in particular as case studies, New York and Washington, and total population data for each state was defined according to US Census data for July 1, 2019 (US Census).

## 3. Results

### 3.1. Analytic results

Closed-form expressions for the basic reproduction number,  $\mathcal{R}_0$ , for the baseline model without masks and the full model with masks are given, for  $\beta(t) \equiv \beta_0$ , in Appendix A and B, respectively.

### 3.2. Masks coverage/efficacy/time to adoption in simulated epidemics

#### 3.2.1. Mask/efficacy interaction under immediate adoption

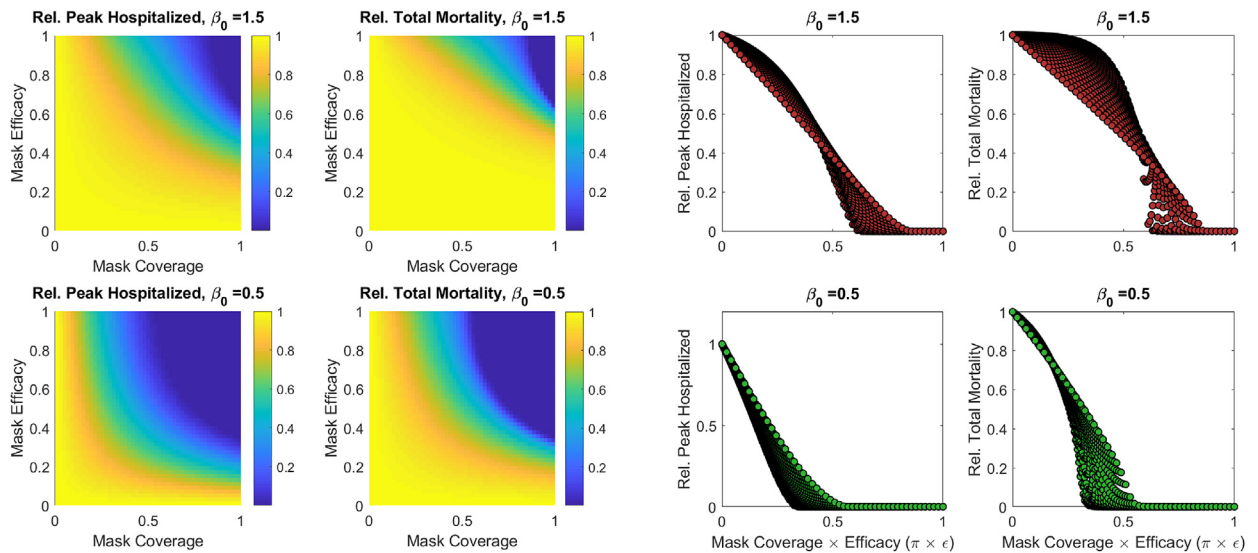
We run simulated epidemics using either  $\beta_0 = 0.5$  or  $1.5 \text{ day}^{-1}$ , with other parameters set to the defaults given in Table 1. These parameter sets give epidemic doubling times early in time (in terms of cumulative cases and deaths) of approximately seven or three days, respectively, corresponding to case and mortality doubling times observed (early in time) in Washington and New York state, respectively. We use as initial conditions a normalized population of 1 million persons, all of whom are initially susceptible, except 50 initially symptomatically infected (i.e., 5 out 100,000 is the initial infection rate), not wearing masks.

We choose some fraction of the population to be initially in the masked class ("mask coverage"), which we also denote  $\pi$ , and assume  $\varepsilon_0 = \varepsilon_i = \varepsilon$ . The epidemic is allowed to run its course (18 simulated months) under constant conditions, and the outcomes of interest are peak hospitalization, cumulative deaths, and total recovered. These results are normalized against the counterfactual of no mask coverage, and results are presented as heat maps in Fig. 1.

**Table 1**

Baseline model parameters with brief description, likely ranges based on modeling and clinical studies (see text for further details), and default value chosen for this study.

Parameter	Likely range (references)	Default value
$\beta$ (infectious contact rate)	0.5–1.5 $\text{day}^{-1}$ (Li et al., 2020; Read et al., 2020; Shen et al., 2020), this work	0.5 $\text{day}^{-1}$
$\sigma$ (transition exposed to infectious)	1/14–1/3 $\text{day}^{-1}$ (Lauer et al., 2020; Li et al., 2020)	1/5.1 $\text{day}^{-1}$
$\eta$ (infectiousness factor for asymptomatic carriers)	0.4–0.6 (Ferguson et al., 2020; Li et al., 2020)	0.5
$\alpha$ (fraction of infections that become symptomatic)	0.15–0.7 (Ferguson et al., 2020; Li et al., 2020; Moriarty, 2020; Verity et al., 2020)	0.5
$\phi$ (rate of hospitalization)	0.02–0.1 (Ferguson et al., 2020; Zhou et al., 2020)	0.025 $\text{day}^{-1}$
$\gamma_A$ (recovery rate, Asymptomatic)	1/14–1/3 $\text{day}^{-1}$ (Tang et al., 2020; Zhou et al., 2020)	1/7 $\text{day}^{-1}$
$\gamma_I$ (recovery rate, symptomatic)	1/30–1/3 $\text{day}^{-1}$ (Tang et al., 2020; Zhou et al., 2020)	1/7 $\text{day}^{-1}$
$\gamma_H$ (recovery rate, hospitalized)	1/30–1/3 $\text{day}^{-1}$ (Tang et al., 2020; Zhou et al., 2020)	1/14 $\text{day}^{-1}$
$\delta$ (death rate, hospitalized)	0.001–0.1 (Ferguson et al., 2020)	0.015 $\text{day}^{-1}$



**Fig. 1.** Relative peak hospitalizations and cumulative mortality under simulated epidemics, under either a base  $\beta_0 = 0.5$  or  $1.5 \text{ day}^{-1}$ , under different general mask coverage levels and efficacies (where  $\epsilon_o = \epsilon_i = \epsilon$ ). Results are relative to a base case with no mask use. The left half of the figure gives these metrics as two-dimensional functions of coverage and efficacy. The right half gives these metrics as one-dimensional functions of coverage  $\times$  efficacy.

Note that the product  $\epsilon \times \pi$  predicts quite well the effect of mask deployment: Fig. 1 also shows (relative) peak hospitalizations and cumulative deaths as functions of this product. There is, however, a slight asymmetry between coverage and efficacy, such that increasing coverage of moderately effective masks is generally more useful than increasing the effectiveness of masks from a starting point of moderate coverage.

### 3.2.2. Delayed adoption

We run the simulated epidemics described, supposing the entire population is unmasked until mass mask adoption after some discrete delay. The level of adoption is also fixed as a constant. We find that a small delay in mask adoption (without any changes in  $\beta$ ) has little effect on peak hospitalized fraction or cumulative deaths, but the “point of no return” can rapidly be crossed, if mask adoption is delayed until near the time at which the epidemic otherwise crests. This general pattern holds regardless of  $\beta_0$ , but the point of no return is further in the future for smaller  $\beta_0$ .

### 3.3. Mask use and equivalent $\beta$ reduction

The relationship between mask coverage, efficacy, and metrics of epidemic severity considered above are highly nonlinear. The relationship between  $\beta_0$  (the infectious contact rate) and such metrics is similarly nonlinear. However, incremental reductions in  $\beta_0$ , due to social distancing measures, etc., can ultimately synergize with other reductions to yield a meaningful effect on the epidemic. Therefore, we numerically determine what the *equivalent* change in  $\beta_0$  under the baseline would have been under mask use at different coverage/efficacy levels, and we denote the equivalent  $\beta_0$  value as  $\tilde{\beta}_0$ .

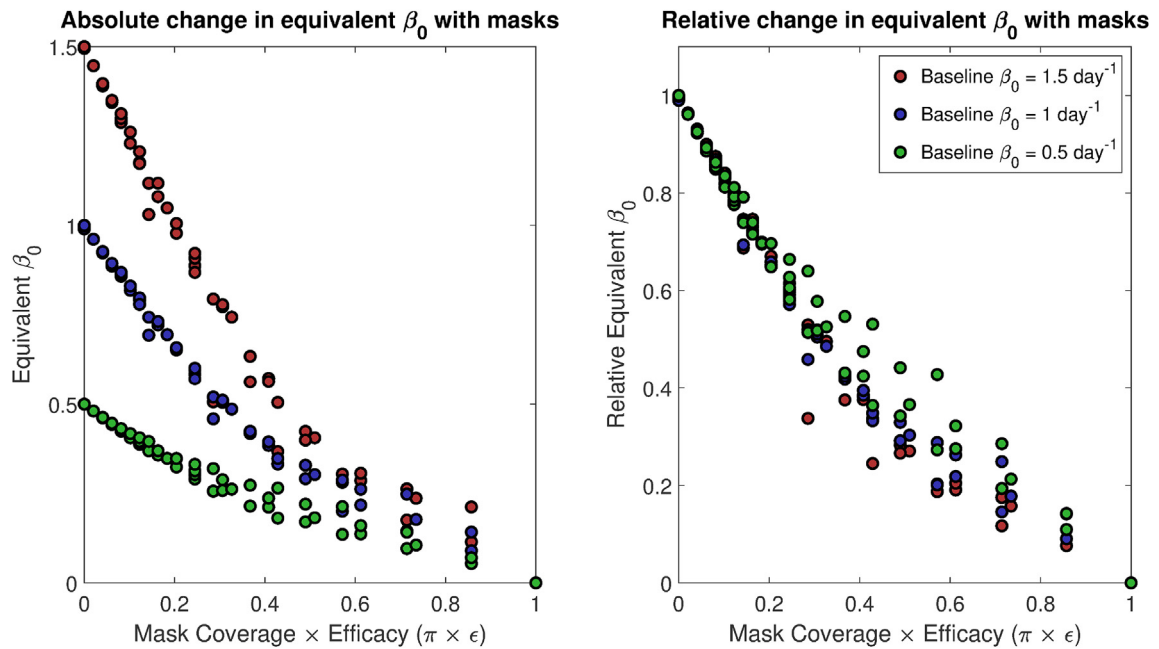
That is, we numerically simulate an epidemic with and without masks, with a fixed  $\beta_0$ . Then, we fit the baseline model to this (simulated) case data, yielding a new *equivalent*  $\beta_0$ ,  $\tilde{\beta}_0$ . An excellent fit giving  $\tilde{\beta}_0$  can almost always be obtained, though occasionally results are extremely sensitive to  $\beta_0$  for high mask coverage/efficacy, yielding somewhat poorer fits. Results are summarized in Fig. 2, where the  $\tilde{\beta}_0$  values obtained and the relative changes in equivalent  $\beta$  (i.e.,  $(\tilde{\beta}_0)/(\beta_0)$ ) are plotted as functions of efficacy times coverage,  $\epsilon \times \pi$ , under simulated epidemics with three baseline (true)  $\beta_0$  values.

From Fig. 2, we see that even 50% coverage with 50% effective masks roughly halves the effective disease transmission rate. Widespread adoption, say 80% coverage, of masks that are only 20% effective still reduces the effective transmission rate by about one-third.

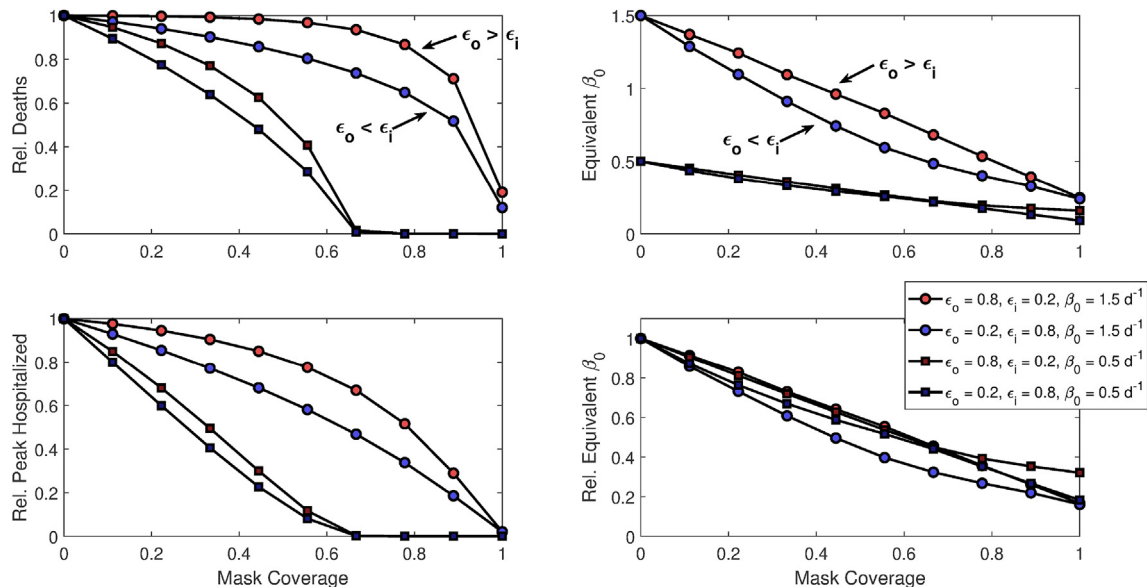
### 3.4. Outward vs. inward efficiency

Fig. 3 demonstrates the effect of mask coverage on peak hospitalizations, cumulative deaths, and equivalent  $\beta_0$  values when either  $\epsilon_o = 0.2$  and  $\epsilon_i = 0.8$ , or visa versa (and for simulated epidemics using either  $\beta_0 = 0.5$  or  $1.5 \text{ day}^{-1}$ ). These results suggest that, all else equal, the protection masks afford against acquiring infection ( $\epsilon_i$ ) is actually slightly more important than protection against transmitting infection ( $\epsilon_o$ ), although there is overall little meaningful asymmetry.





**Fig. 2.** Equivalent  $\beta_0$ ,  $\tilde{\beta}_0$  (infectious contact rate) under baseline model dynamics as a function of mask coverage  $\times$  efficacy, with the left panel giving the absolute value, and the right giving the ratio of  $\tilde{\beta}_0$  to the true  $\beta_0$  in the simulation with masks. That is, simulated epidemics are run with mask coverage and effectiveness ranging from 0 to 1, and the outcomes are tracked as synthetic data. The baseline model without mask dynamics is then fit to this synthetic data, with  $\beta_0$  the trainable parameter; the resulting  $\tilde{\beta}_0$  is the  $\beta_0$ . This is done for simulated epidemics with a true  $\beta_0$  of 1.5, 1, or 0.5  $\text{day}^{-1}$ .



**Fig. 3.** Epidemiologic outcomes and equivalent  $\beta_0$  changes as a function of mask coverage when masks are either much better at blocking outgoing ( $\epsilon_o = 0.8$ ,  $\epsilon_i = 0.2$ ) or incoming ( $\epsilon_o = 0.2$ ,  $\epsilon_i = 0.8$ ) transmission. Results are demonstrated for both mask permutations under simulated epidemics with baseline  $\beta_0 = 0.5$  or 1.5  $\text{day}^{-1}$ .

### 3.5. Masks for symptomatic alone vs. general population

Finally, we consider numerical experiments where masks are given to all symptomatically infected persons, whether they otherwise habitually wear masks or not (i.e., both  $I_U$  and  $I_M$  actually wear masks). We explore how universal mask use in symptomatically infected persons interacts with mask coverage among the general population; we let  $\epsilon_o^I$  represent the

effectiveness of masks in the symptomatic, not necessarily equal to  $\varepsilon_0$ . We again run simulated epidemics with no masks, or with universal masks among the symptomatic, and then compare different levels of mask coverage in the general (asymptomatic) population in addition to universal masks for the symptomatic. In this section, we use equivalent  $\beta_0$  as our primary metric. Fig. 4 shows how this metric varies as a function of the mask effectiveness given to symptomatic persons, along with the coverage and effectiveness of masks worn by the general public.

We also explore how conclusions vary when either 25%, 50%, or 75% of infectious COVID-19 patients are *asymptomatic* (i.e., we vary  $\alpha$ ). Unsurprisingly, the greater the proportion of infected people that are asymptomatic, the more benefit there is to giving the general public masks in addition to those experiencing symptoms.

### 3.6. Simulated case studies: New York & Washington states

Fitting to cumulative death data for New York and Washington states, we use the baseline model to determine the best fixed  $\beta_0$  and  $I(0)$ . We use New York state data beginning on March 1, 2020, through April 2, 2020, and Washington state data from February 20, 2020 through April 2, 2020. For New York state, best-fit parameters are  $I(0) = 208$  (range 154–264) and  $\beta_0 = 1.40$  (1.35–1.46)  $\text{day}^{-1}$  under fixed  $\beta_0$ . For the time-varying  $\beta(t)$ , we fix  $r = 0.03 \text{ day}^{-1}$  and  $t_0 = 20$ , yielding a best-fit  $\beta_0 = 1.33$  (1.24–1.42)  $\text{day}^{-1}$ ,  $\beta_{\min} = 0.51$  (–0.25–1.26)  $\text{day}^{-1}$ , and  $I(0) = 293$  (191–394).

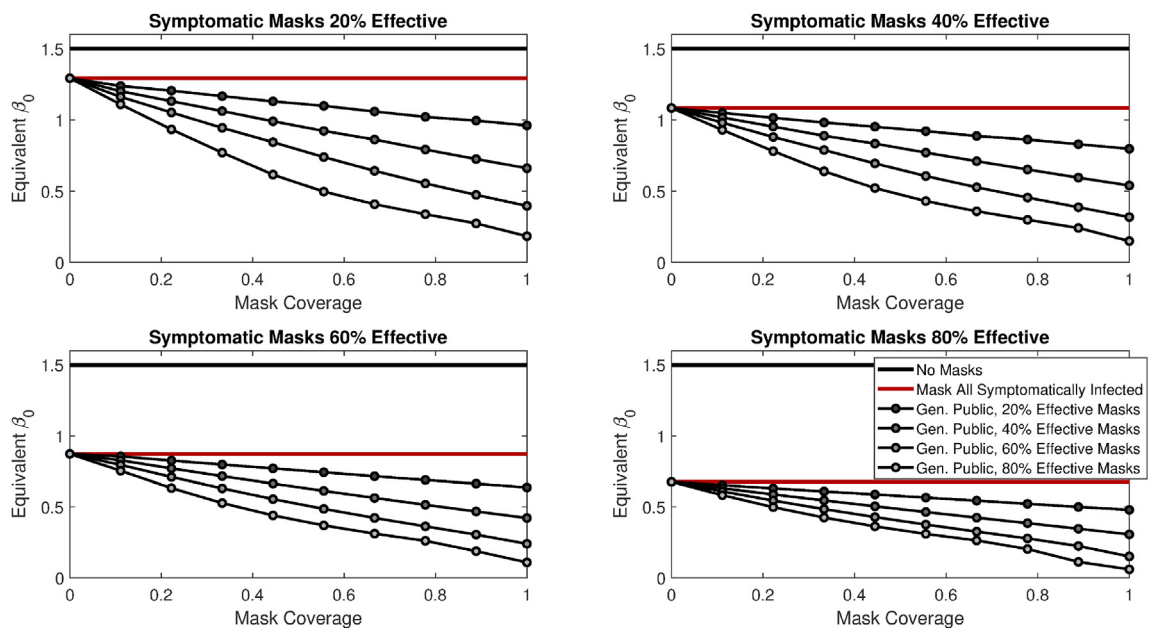
For Washington state, parameters are  $I(0) = 622$  (571–673) and  $\beta_0 = 0.50$  (0.49–0.52)  $\text{day}^{-1}$  under fixed  $\beta_0$ . For time-varying  $\beta(t)$ , we fix  $r = 0.04 \text{ day}^{-1}$  and  $t_0 = 0$ , to yield a best-fit  $\beta_0 = 1.0$  (0.87–1.23)  $\text{day}^{-1}$ ,  $\beta_{\min} = 0.10$  (0–0.19)  $\text{day}^{-1}$ , and  $I(0) = 238$  (177–300).

We fix  $r$  and  $t_0$ , as it is not possible to uniquely identify  $r$ ,  $t_0$  and  $\beta_{\min}$  from death or case data alone (see, e.g., Roda, Varughese, Han, & Li, 2020 on identifiability problems). Fig. 5 gives cumulative death and case data versus the model predictions for the two states, and for the two choices of  $\beta(t)$ . Note that while modeled and actual cumulative deaths match well, model-predicted cases markedly exceed reported cases in the data, consistent with the notion of broad underreporting.

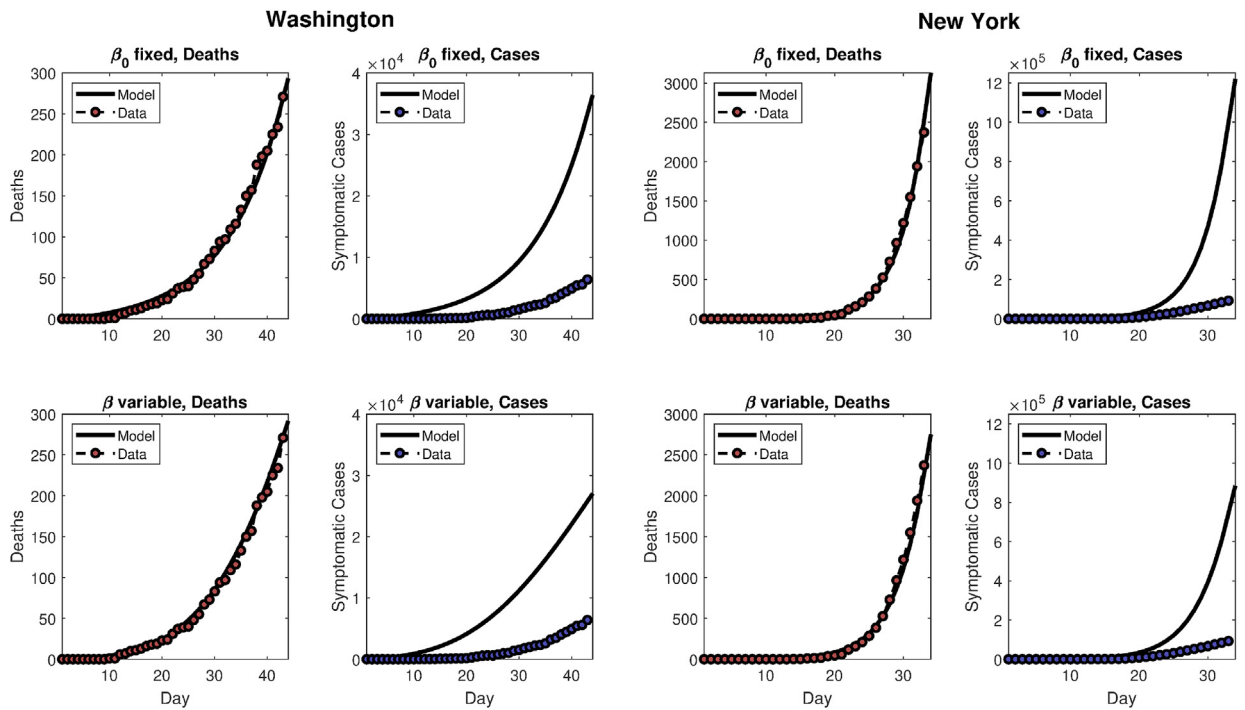
We then consider either fixed  $\beta_0$  or time-varying  $\beta(t)$ , according to the parameters above, in combination with the following *purely hypothetical* scenarios in each state.

1. No masks, epidemic runs its course unaltered with either  $\beta(t) \equiv \beta_0$  fixed or  $\beta(t)$  variable as described above.
2. The two  $\beta$  scenarios are considered in combination with: weak, moderate, or strong deployment of masks, such that  $\pi = 0.2, 0.5$ , or  $0.8$ ; and weak, moderate, or strong masks, such that  $\varepsilon = 0.2, 0.5$ , or  $0.8$ . No masks are used up until April 2, 2020, and then these coverage levels are instantaneously imposed.

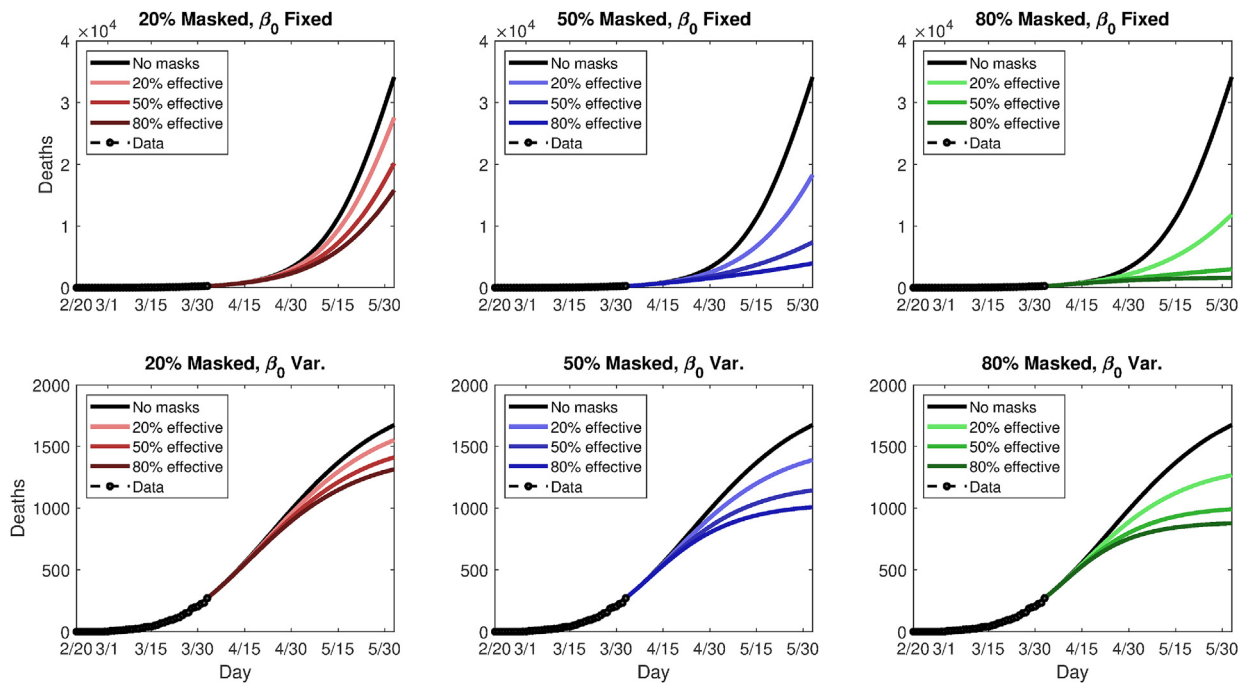
This yields 18 scenarios in all (nine mask coverage/efficacy scenarios, plus two underlying trends). Following the modeled imposition of masks on April 2, 2020, the scenarios are run for 60 additional simulated days. Figs. 6 and 8 summarize the



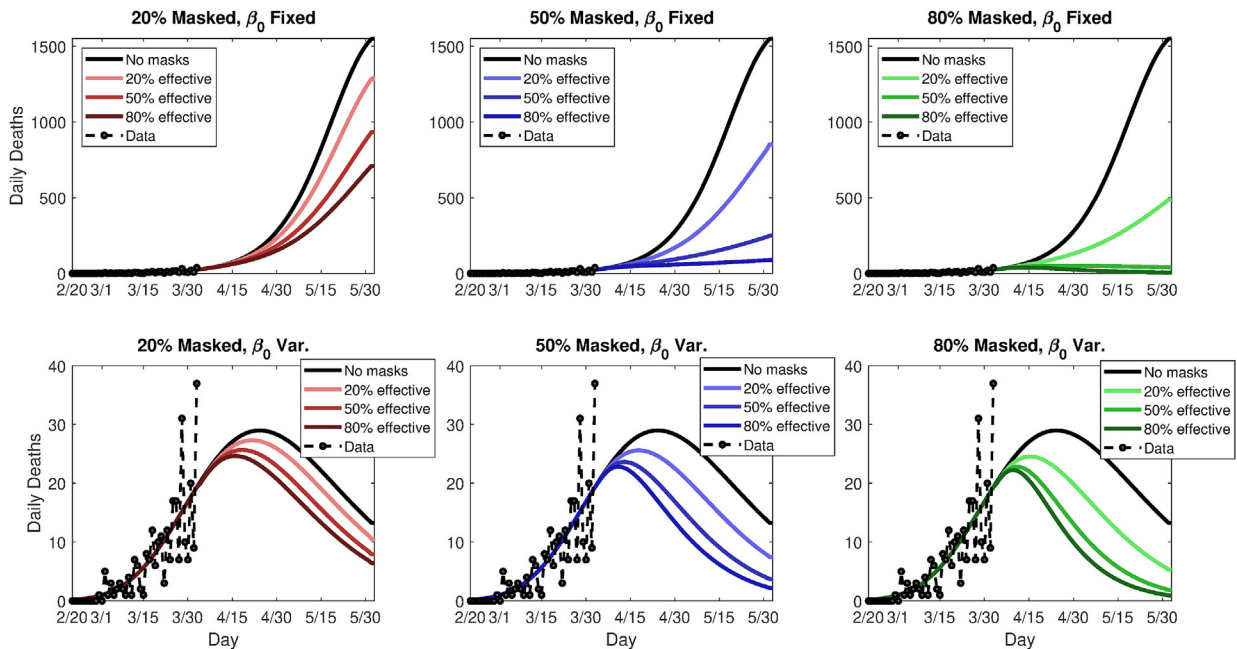
**Fig. 4.** Equivalent  $\beta_0$  under the model where *all* symptomatic persons wear a mask (whether they otherwise habitually wear a mask or not), under varying levels of efficacy for the masks given to the symptomatic ( $\varepsilon_0$ ), and in combination with different degrees of coverage and effectiveness for masks used by the rest of the general public. Results are for simulated epidemics with a baseline  $\beta_0$  of  $1.5 \text{ day}^{-1}$ .



**Fig. 5.** The left half of the figure gives model predictions and data for Washington state, using either a constant (top panels) or variable  $\beta$  (bottom panel), as described in the text. The right half of the figure is similar, but for New York state.



**Fig. 6.** Simulated future (cumulative) death tolls for Washington state, using either a fixed (top panels) or variable (bottom panels) transmission rate,  $\beta$ , and nine different permutations of general public mask coverage and effectiveness. The y-axes are scaled differently in top and bottom panels.



**Fig. 7.** Simulated future *daily death rates* for Washington state, using either a fixed (top panels) or variable (bottom panels) transmission rate,  $\beta$ , and nine different permutations of general public mask coverage and effectiveness. The y-axes are scaled differently in top and bottom panels.

future modeled death toll in each city under the 18 different scenarios, along with historical mortality data. Figs. 7 and 9 show modeled daily death rates, with deaths peaking sometime in late April in New York state under all scenarios, while deaths could peak anywhere from mid-April to later than May, for Washington state. We emphasize that these are hypothetical and exploratory results, with possible death tolls varying dramatically based upon the future course of  $\beta(t)$ . However, the results do suggest that even modestly effective masks, if widely used, could help “bend the curve,” with the relative benefit greater in combination with a lower baseline  $\beta_0$  or stronger underlying trend towards smaller  $\beta(t)$  (i.e., in Washington vs. New York).

#### 4. Discussion & conclusions

There is considerable ongoing debate on whether to recommend general public face mask use (likely mostly homemade cloth masks or other improvised face coverings) 4, and while the situation is in flux, more authorities are recommending public mask use, though they continue to (rightly) cite appreciable uncertainty. With this study, we hope to help inform this debate by providing insight into the potential community-wide impact of widespread face mask use by members of the general population. We have designed a mathematical model, parameterized using data relevant to COVID-19 transmission dynamics in two US states (New York and Washington), and our model suggests nontrivial and possibly quite strong benefits to general face mask use. The population-level benefit is greater the earlier masks are adopted, and at least some benefit is realized across a range of epidemic intensities. Moreover, even if they have, as a sole intervention, little influence on epidemic outcomes, face masks decrease the equivalent effective transmission rate ( $\beta_0$  in our model), and thus can stack with other interventions, including social distancing and hygienic measures especially, to ultimately drive nonlinear decreases in epidemic mortality and healthcare system burden. It bears repeating that our model results are consistent with the idea that face masks, while no panacea, may synergize with other non-pharmaceutical control measures and should be used in combination with and not in lieu of these.

Under simulated epidemics, the effectiveness of face masks in altering the epidemiologic outcomes of peak hospitalization and total deaths is a highly nonlinear function of both mask efficacy and coverage in the population (see Fig. 1), with the product of mask efficacy and coverage a good one-dimensional surrogate for the effect. We have determined how mask use in the full model alters the *equivalent*  $\beta_0$ , denoted  $\tilde{\beta}_0$ , in the baseline model (without masks), finding this equivalent  $\tilde{\beta}_0$  to vary nearly linearly with efficacy  $\times$  coverage (Fig. 2).

Masks alone, unless they are highly effective and nearly universal, may have only a small effect (but still nontrivial, in terms of absolute lives saved) in more severe epidemics, such as the ongoing epidemic in New York state. However, the relative benefit to general mask use may increase with other decreases in  $\beta_0$ , such that masks can synergize with other public health measures. Thus, it is important that masks not be viewed as an alternative, but as a complement, to other public health

control measures (including non-pharmaceutical interventions, such as social distancing, self-isolation etc.). Delaying mask adoption is also detrimental. These factors together indicate that even in areas or states where the COVID-19 burden is low (e.g. the Dakotas), early aggressive action that includes face masks may pay dividends.

These general conclusions are illustrated by our simulated case studies, in which we have tuned the infectious contact rate,  $\beta$  (either as fixed  $\beta_0$  or time-varying  $\beta(t)$ ), to cumulative mortality data for Washington and New York state through April 2, 2020, and imposed hypothetical mask adoption scenarios. The estimated range for  $\beta$  is much smaller in Washington state, consistent with this state's much slower epidemic growth rate and doubling time. Model fitting also suggests that total symptomatic cases may be dramatically undercounted in both areas, consistent with prior conclusions on the pandemic (Li et al., 2020). Simulated futures for both states suggest that broad adoption of even weak masks could help avoid many deaths, but the greatest relative death reductions are generally seen when the underlying transmission rate also falls or is low at baseline.

Considering a fixed transmission rate,  $\beta_0$ , 80% adoption of 20%, 50%, and 80% effective masks reduces cumulative relative (absolute) mortality by 1.8% (4,419), 17% (41,317), and 55% (134,920), respectively, in New York state. In Washington state, relative (absolute) mortality reductions are dramatic, amounting to 65% (22,262), 91% (31,157), and 95% (32,529). When  $\beta(t)$  varies with time, New York deaths reductions are 9% (21,315), 45% (103,860), and 74% (172,460), while figures for Washington are 24% (410), 41% (684), and 48% (799). In the latter case, the epidemic peaks soon even without masks. Thus, a range of outcomes are possible, but both the absolute and relative benefit to weak masks can be quite large; when the relative benefit is small, the absolute benefit in terms of lives is still highly nontrivial.

Most of our model projected mortality numbers for New York and Washington state are quite high (except for variable  $\beta(t)$  in Washington), and likely represent worst-case scenarios, as they primarily reflect  $\beta$  values early in time. Thus, they may be dramatic overestimates, depending upon these states' populations ongoing responses to the COVID-19 epidemics. Nevertheless, the estimated transmission values for the two states, under fixed and variable  $\beta(t)$ , represent a broad range of possible transmission dynamics and are within the range estimated in prior studies (Li et al., 2020; Read et al., 2020; Shen et al., 2020), and so we may have some confidence in our general conclusions on the possible range of benefits to masks. Note also that we have restricted our parameter estimation only to initial conditions and transmission parameters, owing to identifiability problems with more complex models and larger parameter groups (see e.g. Roda, Varughese, Han, & Li, 2020). For example, the same death data may be consistent with either a large  $\beta_0$  and low  $\delta$  (death rate), or visa versa.

Considering the subproblem of general public mask use in addition to mask use for source control by any (known) symptomatic person, we find that general face mask use is still highly beneficial (see Fig. 4). Unsurprisingly, this benefit is greater if a larger proportion of infected people are asymptomatic (i.e.,  $\alpha$  in the model is smaller). Moreover, it is not the case that masks are helpful exclusively when worn by asymptomatic infectious persons for source control, but provide benefit when worn by (genuinely) healthy people for prevention as well. Indeed, if there is any asymmetry in outward vs. inward mask effectiveness, inward effectiveness is actually slightly preferred, although the direction of this asymmetry matters little with respect to overall epidemiologic outcomes. At least one experimental study (Patel et al., 2016) does suggest that masks may be superior at source control, especially under coughing conditions vs. normal tidal breathing and so any realized benefit of masks in the population may still be more attributable to source control.

This is somewhat surprising, given that  $\varepsilon_o$  appears more times than  $\varepsilon_i$  in the model terms giving the forces of infection, which would suggest outward effectiveness to be of greater import at first glance. Our conclusion runs counter to the notion that general public masks are primarily useful in preventing asymptotically wearers from transmitting disease: Masks are valuable as both source control and primary prevention. This may be important to emphasize, as some people who have self-isolated for prolonged periods may reasonably believe that the chance they are asymptotically infected is very low and therefore do not need a mask if they venture into public, whereas our results indicate they (and the public at large) still stand to benefit.

Our theoretical results still must be interpreted with caution, owing to a combination of potentially high rates of noncompliance with mask use in the community, uncertainty with respect to the intrinsic effectiveness of (especially homemade) masks at blocking respiratory droplets and/or aerosols, and even surprising amounts of uncertainty regarding the basic mechanisms for respiratory infection transmission (Bourouiba, 2020; MacIntyre et al., 2017). Several lines of evidence support the notion that masks can interfere with respiratory virus transmission, including clinical trials in healthcare workers (MacIntyre et al., 2017; Offeddu et al., 2017), experimental studies as reviewed in (Davies et al., 2013; Dharmadikari et al., 2012; Lai et al., 2012; Patel et al., 2016; van der Sande et al., 2008), and case control data from the 2003 SARS epidemic (Lau et al., 2004; Wu et al., 2004). Given the demonstrated efficacy of medical masks in healthcare workers (Offeddu et al., 2017), and their likely superiority over cloth masks in MacIntyre et al. (2015), it is clearly essential that healthcare works be prioritized when it comes to the most effective medical mask supply. Fortunately, our theoretical results suggest significant (but potentially highly variable) value even to low quality masks when used widely in the community.

With social distancing orders in place, essential service providers (such as retail workers, emergency services, law enforcement, etc.) represent a special category of concern, as they represent a largely unavoidable high contact node in transmission networks: Individual public-facing workers may come into contact with hundreds or thousands of people in the course of a day, in relatively close contact (e.g. cashiers). Such contact likely exposes the workers to many asymptomatic



carriers, and they may in turn, if asymptomatic, expose many susceptible members of the general public to potential transmission. Air exposed to multiple infectious persons (e.g. in grocery stores) could also carry a pseudo-steady load of infectious particles, for which masks would be the only plausible prophylactic (Lai et al., 2012). Thus, targeted, highly effective mask use by service workers may be reasonable. We are currently extending the basic model framework presented here to examine this hypothesis.

In conclusion, our findings suggest that face mask use should be as nearly universal (i.e., nation-wide) as possible and implemented without delay, even if most masks are homemade and of relatively low quality. This measure could contribute greatly to controlling the COVID-19 pandemic, with the benefit greatest in conjunction with other non-pharmaceutical interventions that reduce community transmission. Despite uncertainty, the potential for benefit, the lack of obvious harm, and the precautionary principle lead us to strongly recommend as close to universal (homemade, unless medical masks can be used without diverting healthcare supply) mask use by the general public as possible.

### Declaration of competing interest

None.

### Acknowledgements

One of the authors (ABG) acknowledge the support, in part, of the Simons Foundation (Award #585022) and the National Science Foundation (Award 1917512).

### Appendix A. Basic Reproduction Number for the Baseline Model

The basic reproduction number is calculated for the special case when  $\beta(t) \equiv \beta_0$ . The local stability of the disease-free equilibrium (DFE) is explored using the next generation operator method (Diekmann, Heesterbeek, & Metz, 1990; van den Driessche & Watmough, 2002). Using the notation in (van den Driessche & Watmough, 2002), it follows that the matrices  $\mathcal{F}$  of new infection terms and  $\mathcal{V}$  of the remaining transfer terms associated with the baseline model are given, respectively, by

$$\mathcal{F} = \begin{bmatrix} 0 & \beta_0 & \beta_0\eta \\ 0 & 0 & 0 \\ 0 & 0 & 0 \end{bmatrix},$$

$$\mathcal{V} = \begin{bmatrix} \sigma & 0 & 0 \\ -\alpha\sigma & (\varphi + \gamma_I) & 0 \\ -(1-\alpha)\sigma & 0 & \gamma_A \end{bmatrix}.$$

The basic reproduction number of the model, denoted by  $\mathcal{R}_0$ , is given by

$$\mathcal{R}_0 = \frac{\beta_0\alpha}{(\varphi + \gamma_I)} + \frac{\beta_0\eta(1-\alpha)}{\gamma_A}. \quad (26)$$

### Appendix B. Basic Reproduction Number for Full Model

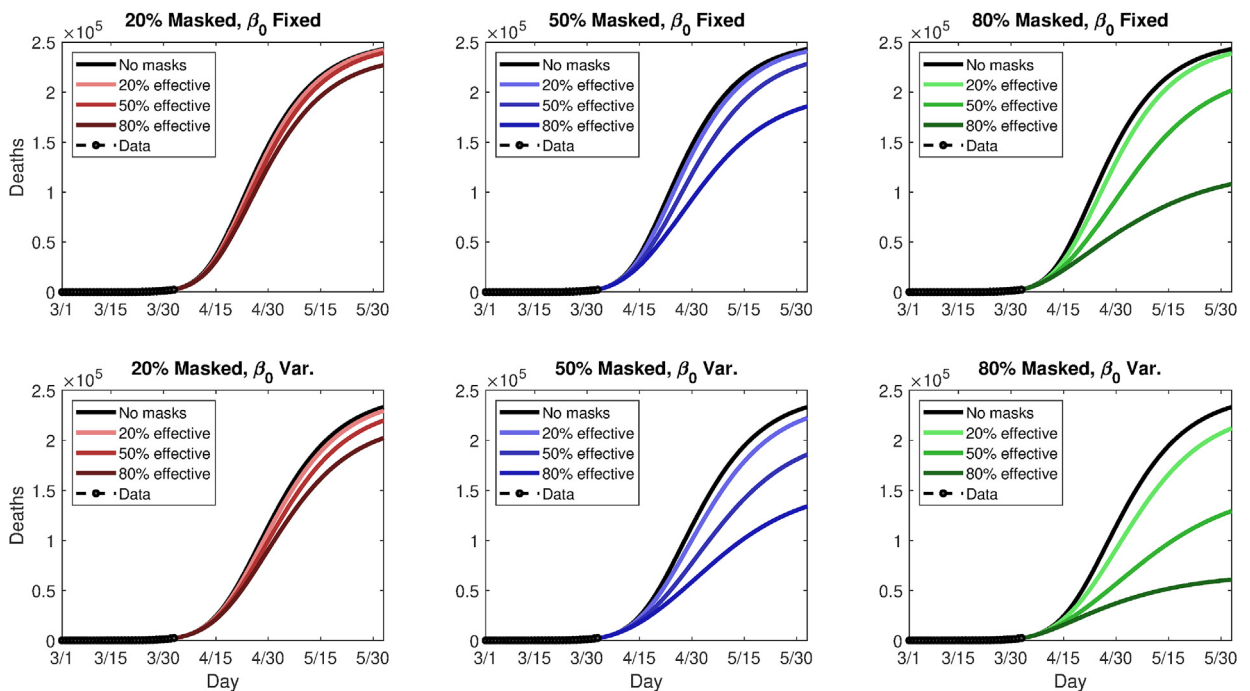
The local stability of the DFE is explored using the next generation operator method (Diekmann et al., 1990; van den Driessche & Watmough, 2002). Using the notation in van den Driessche and Watmough (2002), it follows that the matrices  $\mathcal{F}$  of new infection terms and  $\mathcal{V}$  of the remaining transfer terms associated with the version of the model are given, respectively, by

$$\mathcal{F} = \begin{bmatrix} 0 & \beta_0 \frac{S_U(0)}{N(0)} & \beta_0 \eta \frac{S_U(0)}{N(0)} & 0 & \beta_0(1-\varepsilon_0) \frac{S_U(0)}{N(0)} & \beta_0(1-\varepsilon_0) \eta \frac{S_U(0)}{N(0)} \\ 0 & 0 & 0 & 0 & 0 & 0 \\ 0 & 0 & 0 & 0 & 0 & 0 \\ 0 & \beta_0(1-\varepsilon_i) \frac{S_M(0)}{N(0)} & \beta_0(1-\varepsilon_i) \eta \frac{S_M(0)}{N(0)} & 0 & \beta_0(1-\varepsilon_0)(1-\varepsilon_i) \frac{S_M(0)}{N(0)} & \beta_0(1-\varepsilon_0)(1-\varepsilon_i) \eta \frac{S_M(0)}{N(0)} \\ 0 & 0 & 0 & 0 & 0 & 0 \\ 0 & 0 & 0 & 0 & 0 & 0 \end{bmatrix},$$

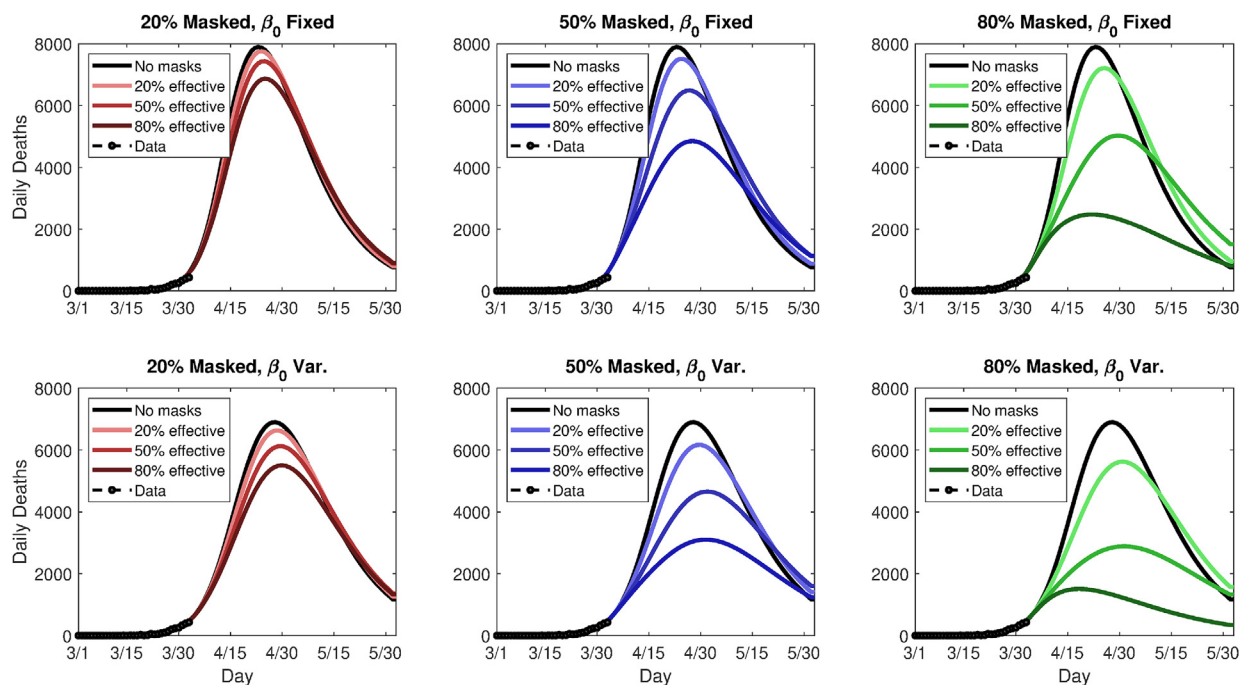
$$\mathcal{V} = \begin{bmatrix} \sigma & 0 & 0 & 0 & 0 & 0 \\ -\alpha\sigma & (\varphi + \gamma_I) & 0 & 0 & 0 & 0 \\ -(1-\alpha)\sigma & 0 & \gamma_A & 0 & 0 & 0 \\ 0 & 0 & 0 & \sigma & 0 & 0 \\ 0 & 0 & 0 & -\alpha\sigma & (\varphi + \gamma_I) & 0 \\ 0 & 0 & 0 & -(1-\alpha)\sigma & 0 & \gamma_A \end{bmatrix}$$

The basic reproduction number of the model, denoted by  $\mathcal{R}_0$ , is given by

$$\mathcal{R}_0 = \beta_0 \left[ \frac{S_U(0)}{N(0)} + \frac{S_M(0)}{N(0)} (1-\varepsilon_0)(1-\varepsilon_i) \right] \left( \frac{\alpha}{\varphi + \gamma_I} + \frac{\eta(1-\alpha)}{\gamma_A} \right). \quad (27)$$



**Fig. 8.** Simulated future (cumulative) death tolls for New York state, using either a fixed (top panels) or variable (bottom panels) transmission rate,  $\beta$ , and nine different permutations of general public mask coverage and effectiveness.



**Fig. 9.** Simulated future daily death rates for New York state, using either a fixed (top panels) or variable (bottom panels) transmission rate,  $\beta$ , and nine different permutations of general public mask coverage and effectiveness.

## References

- Anastassopoulou, C., Russo, L., Tsakris, A., & Siettos, C. (2020). Data-based analysis, modelling and forecasting of the novel coronavirus (2019-nCoV) outbreak. *medRxiv*.
- Biswas, K., Khaleque, A., & Sen, P. (2020). Covid-19 spread: Reproduction of data and prediction using a SIR model on Euclidean network. *arXiv preprint arXiv:2003.07063*.
- Bourouiba, L. (2020). Turbulent gas clouds and respiratory pathogen emissions: Potential implications for reducing transmission of COVID-19. *Journal of the American Medical Association*. <https://doi.org/10.1001/jama.2020.4756>. In press.
- Brienen, N. C., Timen, A., Wallinga, J., Van Steenbergen, J. E., & Teunis, P. F. (2010). The effect of mask use on the spread of influenza during a pandemic. *Risk Analysis: International Journal*, 30(8), 1210–1218.
- Calafiore, G. C., Novara, C., & Possieri, C. (2020). A modified SIR model for the COVID-19 contagion in Italy. *arXiv preprint arXiv:2003.14391*.
- Canini, L., Andreoletti, L., Ferrari, P., D'Angelo, R., Blanchon, T., Lemaître, M., et al. (2010). Surgical mask to prevent influenza transmission in households: A cluster randomized trial. *PLoS One*, 5(11), e13988.
- Center for Systems Science and Engineering at Johns Hopkins University. (2020). COVID-19. *Github repository*. <https://github.com/CSSEGISandData/COVID-19>. (Accessed 2 April 2020).
- Chan, K. H., & Yuen, K. Y. (2020). COVID-19 epidemic: Disentangling the re-emerging controversy about medical facemasks from an epidemiological perspective. *International Journal of Epidemiology*. <https://doi.org/10.1093/ije/dyaa044>. In press.
- Chang, S. L., Harding, N., Zachreson, C., Cliff, O. M., & Prokopenko, M. (2020). Modelling transmission and control of the COVID-19 pandemic in Australia. *arXiv preprint arXiv:2003.10218*.
- Cowling, B. J., Chan, K. H., Fang, V. J., Cheng, C. K., Fung, R. O., Wai, W., et al. (2009). Facemasks and hand hygiene to prevent influenza transmission in households: A cluster randomized trial. *Annals of Internal Medicine*, 151(7), 437–446.
- Davies, A., Thompson, K. A., Giri, K., Kafatos, G., Walker, J., & Bennett, A. (2013). Testing the efficacy of homemade masks: Would they protect in an influenza pandemic? *Disaster Medicine and Public Health Preparedness*, 7(4), 413–418.
- Dehning, J., Zierenberg, J., Spitzner, F. P., Wibral, M., Neto, J. P., Wilczek, M., et al. (2020). Inferring COVID-19 spreading rates and potential change points for case number forecasts. *arXiv preprint arXiv:2004.01105*.
- Dharmadhikari, A. S., Mphahlele, M., Stoltz, A., Venter, K., Mathebula, R., Masotla, T., et al. (2012). Surgical face masks worn by patients with multidrug-resistant tuberculosis: Impact on infectivity of air on a hospital ward. *American Journal of Respiratory and Critical Care Medicine*, 185(10), 1104–1109.
- Diekmann, O., Heesterbeek, J. A. P., & Metz, J. A. (1990). On the definition and the computation of the basic reproduction ratio  $R_0$  in models for infectious diseases in heterogeneous populations. *Journal of Mathematical Biology*, 28(4), 365–382.
- van Doremalen, N., Bushmaker, T., Morris, D. H., Holbrook, M. G., Gamble, A., Williamson, B. N., et al. (2020). Aerosol and surface stability of SARS-CoV-2 as compared with SARS-CoV-1. *New England Journal of Medicine*. <https://doi.org/10.1056/NEJMc2004973>. In press.
- Driessche, K. V., Hens, N., Tilley, P., Quon, B. S., Chilvers, M. A., de Groot, R., et al. (2015). Surgical masks reduce airborne spread of *Pseudomonas aeruginosa* in colonized patients with cystic fibrosis. *American Journal of Respiratory and Critical Care Medicine*, 192(7), 897–899.
- van den Driessche, P., & Watmough, J. (2002). Reproduction numbers and sub-threshold endemic equilibria for compartmental models of disease transmission. *Mathematical Biosciences*, 180(1–2), 29–48.
- Ferguson, N., Laydon, D., Nedjati Gilani, G., Imai, N., Ainslie, K., Baguelin, M., et al. (2020). Report 9: Impact of non-pharmaceutical interventions (NPIs) to reduce COVID19 mortality and healthcare demand.
- Han, Q., Lin, Q., Ni, Z., & You, L. (2020). Uncertainties about the transmission routes of 2019 novel coronavirus. *Influenza and Other Respiratory Viruses*.
- Kucharski, A. J., Russell, T. W., Diamond, C., Liu, Y., Edmunds, J., Funk, S., et al. (2020). Early dynamics of transmission and control of COVID-19: A mathematical modelling study. *The Lancet Infectious Diseases*.
- Lai, A. C. K., Poon, C. K. M., & Cheung, A. C. T. (2012). Effectiveness of facemasks to reduce exposure hazards for airborne infections among general populations. *Journal of The Royal Society Interface*, 9(70), 938–948.

- Lauer, S. A., Grantz, K. H., Bi, Q., Jones, F. K., Zheng, Q., Meredith, H. R., et al. (2020). The incubation period of coronavirus disease 2019 (COVID-19) from publicly reported confirmed cases: Estimation and application. *Annals of Internal Medicine*. <https://doi.org/10.7326/M20-0504>. ePub ahead of print, In press.
- Lau, J. T., Tsui, H., Lau, M., & Yang, X. (2004). SARS transmission, risk factors, and prevention in Hong Kong. *Emerging Infectious Diseases*, 10(4), 587–592.
- Leung, N. H., Chu, D. K., Shiu, E. Y., Chan, K. H., McDevitt, J. J., Hau, B. J., et al. (2020). Respiratory virus shedding in exhaled breath and efficacy of face masks. *Nature Medicine*. <https://doi.org/10.1038/s41591-020-0843-2>. In press.
- Li, R., Pei, S., Chen, B., Song, Y., Zhang, T., Yang, W., et al. (2020). Substantial undocumented infection facilitates the rapid dissemination of novel coronavirus (SARS-CoV2). *Science*.
- MacIntyre, C. R., Cauchemez, S., Dwyer, D. E., Seale, H., Cheung, P., Browne, G., et al. (2009). Face mask use and control of respiratory virus transmission in households. *Emerging Infectious Diseases*, 15(2), 233.
- MacIntyre, C. R., Chughtai, A. A., Rahman, B., Peng, Y., Zhang, Y., Seale, H., et al. (2017). The efficacy of medical masks and respirators against respiratory infection in healthcare workers. *Influenza and other respiratory viruses*, 11(6), 511–517.
- MacIntyre, C. R., Seale, H., Dung, T. C., Hien, N. T., Nga, P. T., Chughtai, A. A., et al. (2015). A cluster randomised trial of cloth masks compared with medical masks in healthcare workers. *BMJ open*, 5(4), e006577.
- Moore, S. E., & Okyere, E. Controlling the transmission dynamics of COVID-19. arXiv preprint arXiv:2004.00443.
- Moriarty, L. F. (2020). Public health responses to COVID-19 outbreaks on cruise ships—worldwide, february–march 2020 (Vol. 69). MMWR. Morbidity and Mortality Weekly Report.
- Nesteruk, I. (2020). Statistics based predictions of coronavirus 2019-nCoV spreading in mainland China. MedRxiv.
- Offeddu, V., Yung, C. F., Low, M. S. F., & Tam, C. C. (2017). Effectiveness of masks and respirators against respiratory infections in healthcare workers: A systematic review and meta-analysis. *Clinical Infectious Diseases*, 65(11), 1934–1942.
- Ong, S. W. X., Tan, Y. K., Chia, P. Y., Lee, T. H., Ng, O. T., Wong, M. S. Y., et al. (2020). Air, surface environmental, and personal protective equipment contamination by severe acute respiratory syndrome coronavirus 2 (SARS-CoV-2) from a symptomatic patient. *Journal of the American Medical Association*. <https://doi.org/10.1001/jama.2020.3227>. In press.
- Patel, R. B., Skaria, S. D., Mansour, M. M., & Smaldone, G. C. (2016). Respiratory source control using a surgical mask: An in vitro study. *Journal of Occupational and Environmental Hygiene*, 13(7), 569–576.
- Read, J. M., Bridgen, J. R., Cummings, D. A., Ho, A., & Jewell, C. P. (2020). Novel coronavirus 2019-nCoV: Early estimation of epidemiological parameters and epidemic predictions. MedRxiv. <https://doi.org/10.1101/2020.01.23.20018549>. In press.
- Roda, W. C., Varughese, M. B., Han, D., & Li, M. Y. (2020). Why is it difficult to accurately predict the COVID-19 epidemic? *Infectious Disease Modelling*, 5, 271–281.
- Ruiz Estrada, M. A., & Koutronas, E. (2020). The networks infection contagious diseases positioning system (NICDP-System): The case of wuhan-COVID-19. Available at: SSRN 3548413.
- van der Sande, M., Teunis, P., & Sabel, R. (2008). Professional and home-made face masks reduce exposure to respiratory infections among the general population. *PloS One*, 3(7), e2618.
- Shen, M., Peng, Z., Xiao, Y., & Zhang, L. (2020). Modelling the epidemic trend of the 2019 novel coronavirus outbreak in China. bioRxiv. The baseline model parameters are listed in Table1, with approximate ranges from the literature based on both clinical and modeling studies (as discussed here).
- Simha, A., Prasad, R. V., & Narayana, S. (2020). A simple stochastic SIR model for COVID 19 infection dynamics for Karnataka: Learning from europe. arXiv preprint arXiv:2003.11920.
- Stockwell, R. E., Wood, M. E., He, C., Sherrard, L. J., Ballard, E. L., Kidd, T. J., et al. (2018). Face masks reduce the release of *Pseudomonas aeruginosa* cough aerosols when worn for clinically relevant periods. *American Journal of Respiratory and Critical Care Medicine*, 198(10), 1339–1342.
- Tang, B., Bragazzi, N. L., Li, Q., Tang, S., Xiao, Y., & Wu, J. (2020). An updated estimation of the risk of transmission of the novel coronavirus (2019-nCoV). *Infectious Disease Modelling*, 5, 248–255.
- Tracht, S. M., Del Valle, S. Y., & Hyman, J. M. (2010). Mathematical modeling of the effectiveness of facemasks in reducing the spread of novel influenza A (H1N1). *PloS One*, 5(2).
- US Census. Annual Estimates of the Resident Population for the United States, Regions, States, and Puerto Rico: April 1, 2010 to July 1, 2019 (NST-EST2019-01). [https://www.census.gov/data/tables/time-series/demo/popest/2010s-state-total.html#par\\_textimage\\_1574439295](https://www.census.gov/data/tables/time-series/demo/popest/2010s-state-total.html#par_textimage_1574439295). Accessed April 2, 2020.
- Verity, R., Okell, L. C., Dorigatti, I., Winskill, P., Whittaker, C., Imai, N., et al. (2020). Estimates of the severity of coronavirus disease 2019: A model-based analysis. In *The lancet infectious diseases*.
- Wang, C. J., Ng, C. Y., & Brook, R. H. (2020). Response to COVID-19 in taiwan: Big data analytics, new technology, and proactive testing. *Journal of the American Medical Association*, 323(14), 1341–1342.
- Wilder, B., Charpignon, M., Killian, J. A., Ou, H. C., Mate, A., Jabbari, S., et al. (2020). The role of age distribution and family structure on COVID-19 dynamics: A preliminary modeling assessment for hubei and lombardy. Available at: SSRN 3564800.
- World Health Organization. (2020). Modes of transmission of virus causing COVID-19: Implications for IPC precaution recommendations: Scientific brief. March 2020 (No. WHO/2019-nCoV/Sci\_Brief/Transmission\_modes/2020.1).
- Wu, J. T., Leung, K., & Leung, G. M. (2020). Nowcasting and forecasting the potential domestic and international spread of the 2019-nCoV outbreak originating in Wuhan, China: A modelling study. *The Lancet*, 395(10225), 689–697.
- Wu, J., Xu, F., Zhou, W., Feikin, D. R., Lin, C. Y., He, X., et al. (2004). Risk factors for SARS among persons without known contact with SARS patients, Beijing, China. *Emerging Infectious Diseases*, 10(2), 210–216.
- Zhang, Y., Yu, X., Sun, H., Tick, G. R., Wei, W., & Jin, B. (2020). COVID-19 infection and recovery in various countries: Modeling the dynamics and evaluating the non-pharmaceutical mitigation scenarios. arXiv preprint arXiv:2003.13901.
- Zhou, F., Yu, T., Du, R., Fan, G., Liu, Y., Liu, Z., et al. (2020). Clinical course and risk factors for mortality of adult inpatients with COVID-19 in Wuhan, China: A retrospective cohort study. *The Lancet*. [https://doi.org/10.1016/S0140-6736\(20\)30566-3](https://doi.org/10.1016/S0140-6736(20)30566-3). In press.